



Software Quick Start Guide

OceanView operates on 32- and 64-bit Windows, Macintosh and Linux operating systems. The software can control any Ocean Insight USB spectrometer.

A complete OceanView Installation and Operation Manual can be found on our website at OceanInsight.com.

Getting Started

Minimum System Requirements

Monitor Resolution	1024 X 768 or higher
RAM	1.5 GB or higher
Processor	Intel Core II Duo @ 1.4 GHz or better
	Intel Core Duo @ 2.0 GHz or better
	AMD Athlon Neo X2 @ 1.6 GHz or better
	Intel Atom @ 2.13 GHz or better
	AMD Athlon 64 x2 @ 1.7 GHz or better
HD Space	300 MB free space

NOTE

Most processors produced in 2010 and later work well with OceanView. OceanView does not run on tablets with ARM processors.

Caution: Do NOT connect the spectrometer to the computer until you install the OceanView software. Follow the instructions below to properly connect and configure your system.

Installation

Windows Installation

The total download is approximately 64 MB (32-bit) or 71 MB (64-bit).

1. Download OceanView from software downloads at OceanInsight.com.
2. Close all other applications running on the computer.
3. Start Internet Explorer.
4. Navigate to the link you received to the OceanView software in your email. Click on the OceanView software appropriate for your Windows operating system.
5. Save the software to the desired location. The default installation directory is \Program Files\Ocean Optics\OceanView.

- The installer wizard guides you through the installation process. The **OceanView** icon location is Start | Programs | Ocean Optics | **OceanView** | **OceanView** and the desktop of the current user.

Device Driver Issues

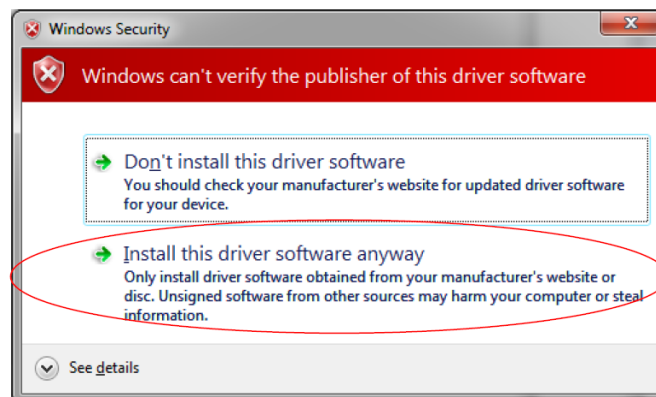
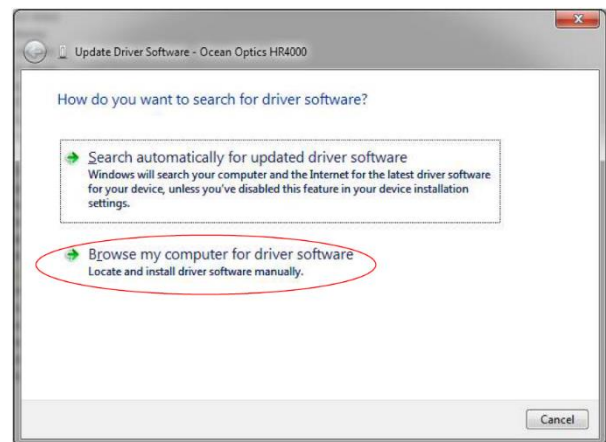
Hardware device driver installation is seamless on Microsoft Windows operating systems when you connect your spectrometer to your computer. However, some Windows systems require a bit more care when connecting your spectrometer for the first time.

If your spectrometer is not recognized by **OceanView** running on your computer, you need to manually install the spectrometer drivers using the procedure below.

Windows Driver Installation Process

Use this procedure when connecting your spectrometer to a Windows 64-bit system. Steps may vary slightly depending on the version of Windows.

- Open the Control Panel. Click Device Manager.
- Right-click on the Ocean Insight spectrometer under Other devices. Choose update driver software. This screen appears:
- Choose Browse my computer for driver software.
- Navigate to C:\Program Files\Ocean Optics\OceanView\SystemFiles. Click OK. Then click Next.
- Choose Install this driver software anyway on this screen.



The software will recognize your spectrometer if the driver installation is successful.

Mac Installation

You must be logged on as an administrative user to install **OceanView** on your Mac. The total download is approximately 35 MB.

NOTE

Newer versions of MacOSX do not ship with Java. You may need to manually install a recent Java release before installing OceanView. Instructions to download a recent Java release for different versions of OSX are here:

<http://support.apple.com/kb/HT5648>

There is also a direct link for the Java for OSX 10.7.3 and newer at:

<http://www.java.com/en/download/manual.jsp#mac>

1. Download **OceanView** from software downloads at OceanInsight.com.
2. Double-click the **OceanViewSetup_Mac.dmg** file to mount the disk image. A new **OceanView** icon that looks like a disk drive appears on your desktop. The new icon should open automatically (if not, double-click it).
3. Drag the **OceanView.app** icon to the Applications folder icon to install **OceanView**. Then you can launch **OceanView** from the Applications folder. Double-click the Applications folder and drag the **OceanView** icon from Applications to the Dock to be able to launch it faster.
4. Drag the **OceanView** drive icon to the trash can once the installation has finished.

Linux Installation

The total download is approximately 75 MB (32-bit) or 67 MB (64-bit).

NOTE

The example below is for a 64 bit installer downloaded to the desktop. Change 64 to 32 and the file location (if needed) for your installation.

1. Start a terminal window. Enter the following commands:
 - a. `chmod 755 ~/Desktop/OceanViewSetup_Linux64.bin`
 - b. `sudo ~/Desktop/OceanViewSetup_Linux64.bin`

The software prompts for your password. This allows you to execute the setup as root. Contact your system administrator if you do not have the password. If the sudo command does not work (it may not be set up for your user account), then enter the following:

- a. `su`
- b. (enter password for root)
- c. `~/Desktop/OceanViewSetup_Linux64.bin`

The Linux version of **OceanView** requires some libraries that may not be installed by default, depending on the Linux distribution. The following libraries are required and are not provided as part of **OceanView**:

- `libstdc++` version 6 or newer
- `libXp` version 6 or newer
- `libusb` version 0.1.10

Make sure that the linux `libusb-0.1` exists in the system. Run either of these commands to verify that it exists:

- `dpkg-query -l | grep -i libusb -or`

- `sudo apt list --installed | grep -i li`
If not found then install the library using this command (this is in Debian, and other Linux systems may have a different method to install library):
 - a. `sudo apt-get install libusb-0.1`
- 2. It may be necessary to modify SELinux (Security Enhanced Linux) restrictions before OceanView will run. It is possible to remove SELinux auditing by running 'setenforce Permissive' as root or by customizing your SELinux policies. The OceanView installer does not modify system security settings.

NOTE

The example below is for a 64-bit installer downloaded to the desktop. Change 64 to 32 and the file location (if needed) for the default installation directory is `/usr/local/OceanOptics/OceanView`.

A symbolic link is put in `/usr/bin` so that you can enter **OceanView** on any command line to start the program.

Product Activation

License

You can activate your **OceanView** software conveniently online. Select Help --> Licensing. Enter the product key in the **OceanView** Licensing dialog box that you received when you purchased the software.

If you do not have an Internet connection, click Offline Registration to display the Product Activation wizard. Use this wizard to save an activation request file and send it to Ocean Insight via an Internet-connected device. Ocean Insight will then reply with your Activation Request file. Use this in Step 3 of the Product Activation wizard.

Start Your 30-Day Free Trial


All data and projects saved during your 30-day free trial will be available when the software is activated using a valid product key. Contact info@oceaninsight.com to purchase **OceanView** licenses.

Double-click the **OceanView** icon on your Desktop to start the software. Click the Cancel button in the **OceanView** Product Activation dialog box that opens to start your 30-day free trial with a fully functional version of **OceanView**.

Using Your Product Key to Activate Your Software

NOTE

An Internet connection is required to activate your software using a valid product key. If an Internet connection is not available, contact info@oceaninsight.com for the offline activation procedure.

1. Double-click the **OceanView** icon () on your desktop to start the software.
2. Click Next in the **OceanView** Product Activation dialog box to enter your product key.
3. Copy the product key from the email you received. Paste it into the product key box.
4. Click the Register Software button to validate your product key.
5. Click Finish to complete the software registration.

If you see the message below, check your Internet connection. Then click the Register Software button again. If the computer is connected to the Internet and you still cannot register your software, contact info@OceanInsight.com for assistance.

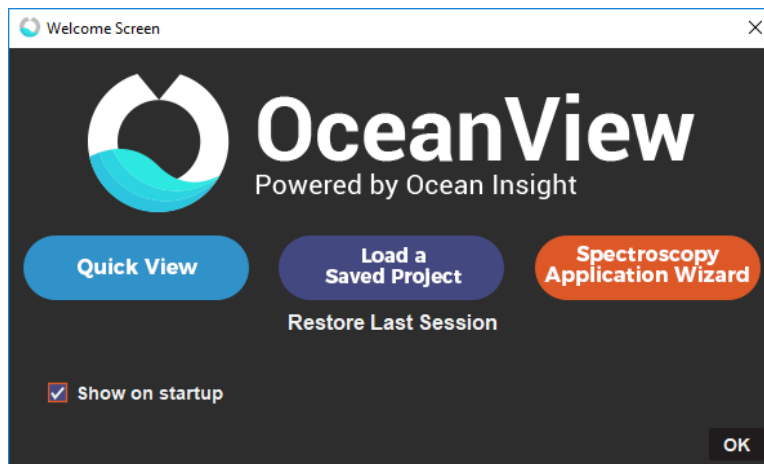
There is a problem with Licensing.
Contact Ocean Insight for help.

Quick Start Guide

When you start **OceanView**, a Welcome screen appears. It asks what you want to do.

Select from the following tasks:

- **Quick View** – Displays the spectrum in Quick View mode showing raw, unprocessed data. This is uncorrected for instrument response vs. wavelength. Quick View shows you a live shot of what the spectrometer is “seeing.” From Quick View you can construct modes for different techniques.
- **Load a Saved Project** – Loads a previously saved project. Click Restore Last Session to reload the schematic and views as they were when the software was last closed.
- **Spectroscopy Application Wizards** – Use these functions to set up a measurement using the simple step-by-step wizards. A range of applications is available.



NOTE

OceanView has context sensitive help. Click the Help button in any dialog box for more details. Tooltips are available by hovering over a button or window for more information. Help is also available with the Help option in the top menu.

Quick View

Select Quick View on the welcome screen to display spectra for all the attached devices in a raw, unprocessed data view. This mode was previously referred to as Scope mode in Ocean

Insights' SpectraSuite software. This is the raw signal from the detector and is proportional to the voltage induced by the light falling on the detector.

It is very important to realize that this is uncalibrated data and that a counts signal does not represent a particular power or energy from one wavelength to the next.

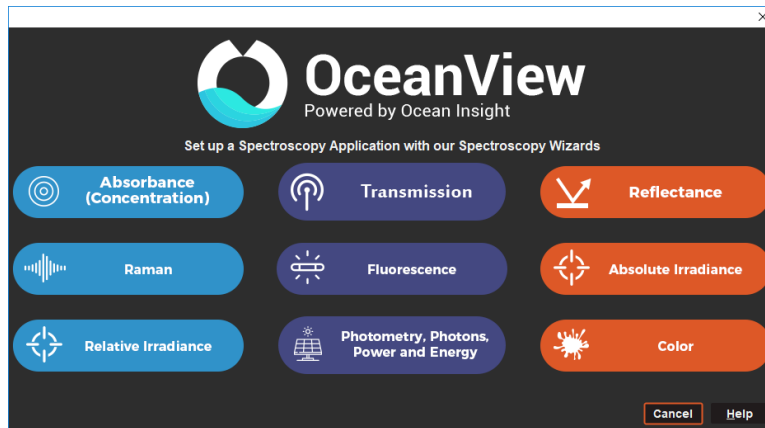
Load a Saved Project


OceanView can save and reload projects. You can quickly enter a processed mode by reloading a previously saved project.

Spectroscopy Application Wizards

The Spectroscopy Wizards are the gateway to making measurements. Each wizard takes the user through a series of setup windows.

Select the appropriate wizard to manage your measurement. This immediately enters the wizard sequence, taking you through the necessary steps to optimize your acquisition and enter the desired processing mode.



The Wizard selection screen can also be accessed with the Create a new spectroscopy application button () or via the File | Create a new spectroscopy application menu item.

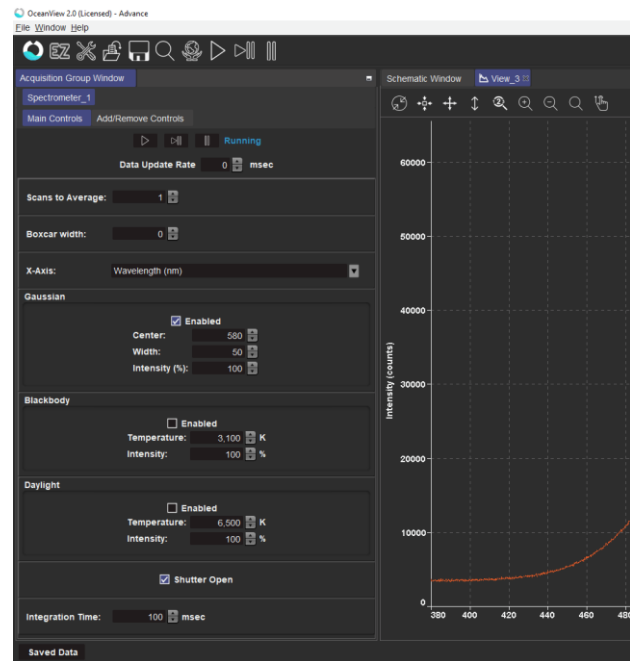
Measurement Interface

After the completion of a measurement wizard, the Measurement Interface is launched. This consists of the Acquisition Group window, the Graph window and the Schematic View window.

Acquisition Group Window

All acquisition controls are in the Acquisition Group Window. You can also select between connected spectrometers via the tabs at the top of the window.

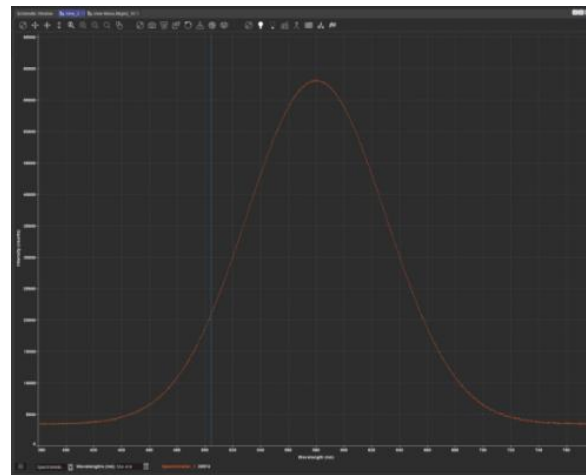
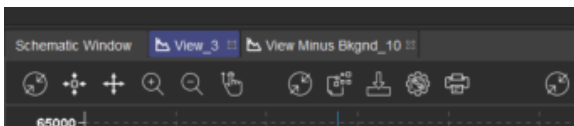
Click the Add/Remove Controls tab to see and select additional features. Check the boxes next to the desired feature. This adds the additional acquisition controls to the Main Controls tab. When the boxes are checked, the controls for these features will show on the Main Controls tab. Unchecking a feature does not disable the feature, it only hides the controls on the Main Controls tab. The spectrometer type determines which controls are available in the Add/Remove Controls tab



Graph Window

The Graph Window actively graphs spectra according to the selections made in the Acquisition Group window.

Active graphs relating to the acquisition (e.g., view, view-background etc.) are indicated on tabs above the graph pane.



These active graphs can be toggled between or dragged around the screen to customize the layout.

Directly above the graph there are a selection of controls for sizing and scaling the axis, capturing and deleting overlay spectra, saving spectra, repeating dark and reference, and other graph functions like peak finding. Hover over the icons to indicate functionality.

NOTE

If a smaller subset of functions is visible, then the operating interface is in EZ (EZ) mode.



The operator can switch to advanced mode (where all icons are active), by clicking on the enter advanced mode (person icon) icon at the top left of the screen.

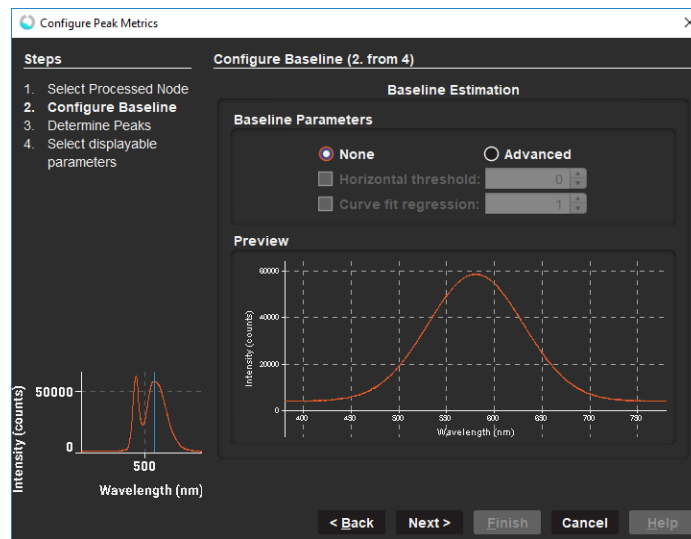
Save Spectra

Saving spectra is performed by first configuring the save (gear icon), and then clicking on (save icon) to perform the action that has been configured. There are various options available. The default setting is 'save every scan' and 'stop after one scan,' which takes the action of saving a single scan to the designated file location.

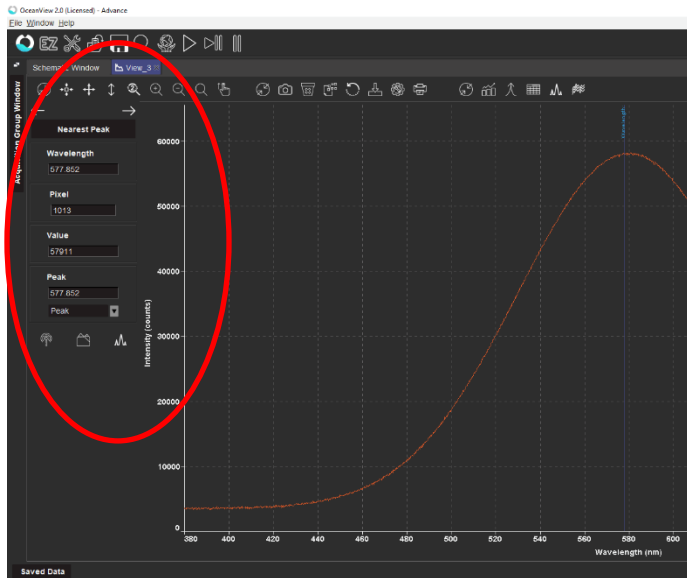
Peak Finding

Click the View Spectrum Peaks button (waveform icon) in Graph View to find the peaks in your spectrum.

The Configure Peak Metrics wizard guides you through a few quick steps to set up your peak finding parameters.



1. Set the baseline level.
2. Choose your peak finding method. Set peak finding criteria and optional spatial filtering.
3. Select which peak parameters to display on the graph, in a table, or both.
4. Make adjustments to peak finding parameters and criteria in the new Peak menu that opens.



5. Close the peak menu.
6. Click the View Spectrum Peaks button () to remove peak information from the graph

Unlock the Unknown

Ocean Insight exists to end guessing. We equip humanity with technology and data to make precisely informed decisions providing transformational clarity for human advancement in health, safety, and the environment.

Questions?

Chat with us at [OceanInsight.com](https://oceaninsight.com).

info@oceaninsight.com • **US** +1 727-733-2447

EUROPE +31 26-3190500 • **ASIA** +86 21-6295-6600